

ShieldTEC Hot Melt Waterproofing System

Description

ShieldTEC Hot Melt Waterproofing System is a specially formulated combination of high quality bitumen, synthetic rubbers, lightweight fillers and other additives, which is hot-applied with carefully selected reinforcement fabrics and protection layers to give a monolithic waterproofing system.

ShieldTEC provides a tough, flexible, non-tracking, self-sealing waterproof membrane for use on inverted, warm, cold, hybrid, blue and living flat roofs and podium areas. ShieldTEC is also suitable for use as a damp-proof membrane in solid concrete floors or as the waterproofing layer above or below ground in concrete, brick or blockwork structures.

Benefits

- Hot applied system
- Suitable for completely flat (zero falls) decks.
- BBA Certified No. 00/3701
- Outstanding durability - lasts the life of the building
- Nominal system thickness of 10mm
- Tough and resistant to impact damage.
- High bond strength to substrate - High tensile strength.
- Monolithic application
- Rapid setting - resistant to rain, snow and frost immediately after application.
- ShieldTEC Hot Melt compound ideally suited for jointing.
- Fully bonded system - Non-tracking

PRODUCT INFORMATION

ShieldTEC Hot Melt Compound

A hot applied specially formulated combination of refined polymer-modified bitumen, synthetic rubbers, fillers and other additives.

Unit Size	20kg dispersible film covered blocks
Approx. coverage (2no. layers @ 3mm per application)	6kg/ m2
Normal laid thickness	6mm
Softening Point	55 - 85C
Penetration	45 - 75mm
Low Temp Flex	BS EN ISO 1109:2000 - PASS
Flow Resistance	<3mm

ShieldPRIME Quick Dry Bitumen Primer

A brush or roller applied bituminous priming solution for the preparation of cementitious surfaces to receive ShieldTEC monolithic membrane.

Drum Size	25 Litres
Approx. coverage (Concrete)	6kg/ m2

ShieldFLEECE

A spunbond polyester reinforcement layer, installed between the two applications of ShieldTEC.

Roll Length	200m
Roll Width	1m
Weight m2	50g

Disclaimer

The evolution of new product design is continuous and information is subject to change without notice. Customers should check with the supplier to ensure that they have the latest details. Shield Membranes reserve the right to amend the technical information as deemed necessary and in accordance with the relevant national and international standards without notice.

0207 740 9279 | www.shieldmembranes.com | info@shieldmembranes.com

“You’re protected with Shield on your side”



SHIELD MEMBRANES

“You’re protected with Shield on your side”



NFRC
LEADING ROOFING EXCELLENCE





ShieldTEC Hot Melt Waterproofing System

PRODUCT INFORMATION

ShieldTEC PS2/4/5
(Inverted roof/ Covered works)

A sand surfaced, polyester based, SBS Modified bitumen membrane, installed as a protection layer in a standard ShieldTEC inverted Roof System.

Roll Length	16m / 8m / 8m
Roll Width	1m for all grades
Weight m2	2 / 4 / 5kg

ShieldFELT (Warm Roof/Exposed Works)

A mineral granule surfaced high performance torch applied bitumen membrane consisting of a 180 g/m2 polyester base coated with SBS modified bitumen. It has a slate finish on the top surface and thermofusible film on the underside. It is installed as a protection layer to ShieldTEC on exposed upstand details or in a Warm Roof scenario.

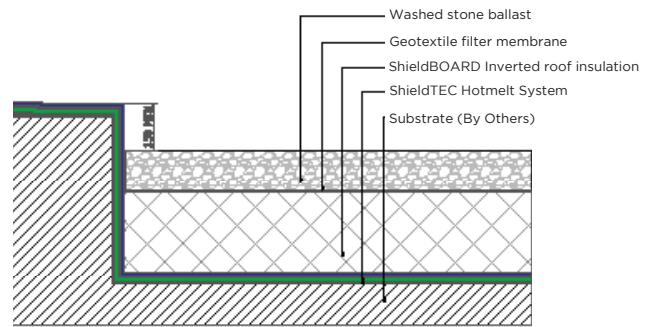
Roll Length	8m
Roll Width	1m
Weight m2	5kg

ShieldROOT M Anti-Root Barrier

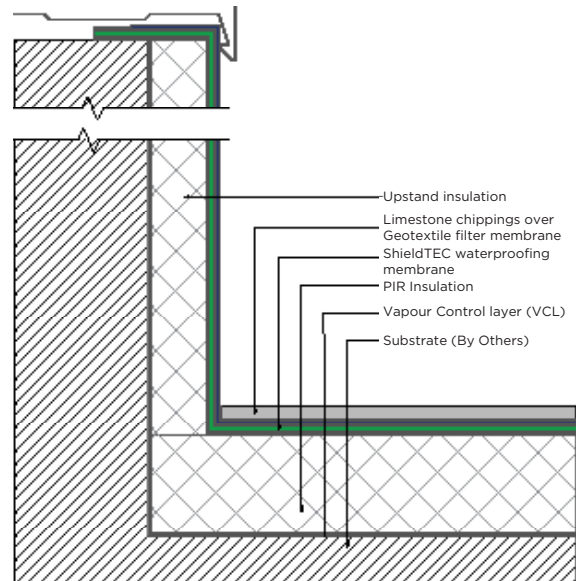
A high performance cap sheet consisting of a high tensile polyester base coated with polymer modified bitumen, containing a specially formulated root resistant additive, for use as the final layer in a roof and podium garden waterproofing specification. ShieldROOT M comes with a slate finish on the upper surface as standard, and a thermofusible film on the underside.

Roll Length	8m
Roll Width	1m
Weight m2	5kg

Typical Design Scenarios



ShieldTEC Inverted System



ShieldTEC Warm Roof System

0207 740 9279 | www.shieldmembranes.com | info@shieldmembranes.com

“You’re protected with Shield on your side”

Whilst every care is taken to see that the information given in this literature is correct and up to date it is not intended to form part of any contract or give rise to any collateral liability, which is hereby specifically excluded. Intending purchasers of our materials should therefore verify with the company whether any changes in our specification or application details or otherwise have taken place since this literature was issued.



SHIELD MEMBRANES

“You’re protected with Shield on your side”



NFRC
LEADING ROOFING EXCELLENCE

